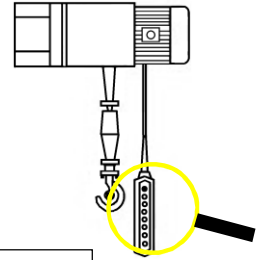


Pendant stations



Hoist control: **P02 P03 HP03 DC30**



LIFTING EQUIPMENT

Characteristics:

- Bi-directional, mechanically interlocked
- IP 65 double insulation IEC/EN60529
- General and electrical data page 23
- Laser engraved symbols comply with EN60204-1, FEM 9.941
- Shock proof and heat resistant



P02



P03



HP03



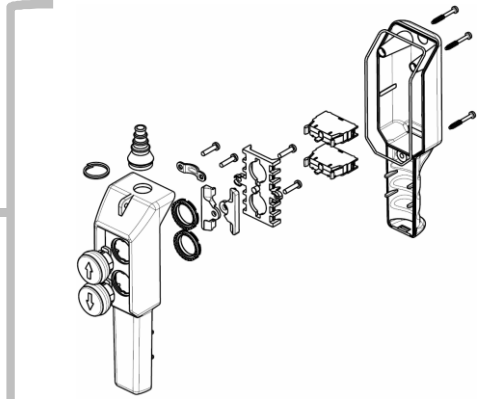
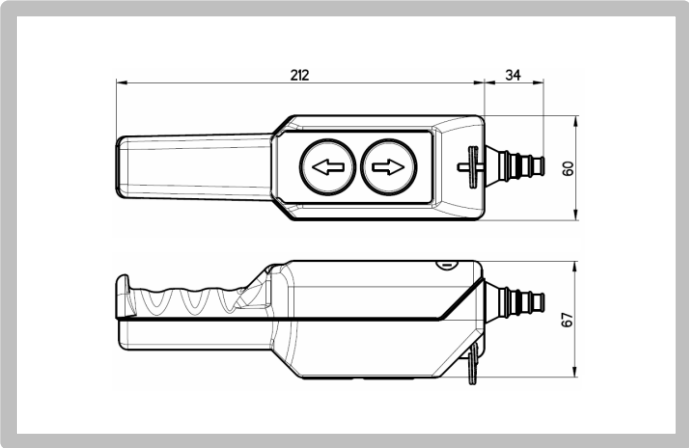
DC30

PICTURE	LAYOUT	CONFIGURATION	CODE	CONTACT TYPE	WEIGHT [gr]	
		SINGLE SPEED (* TILTING BUTTON 16A – 250Vac ½ HP)	P02.RM	1 NO* 1 NO*	230	
		SINGLE SPEED	P02.1		230	
			P02.2		250	
			P02.4		250	
			(* HIGH POWER CONTACTS DIRECT MOTOR CONTROL 1Kw 1ph	P02.CD		230
		TWO SPEED	P02.D2		250	
		SINGLE SPEED	P03.1		440	
			P03.2		450	
			P03.3		460	
				(* HIGH POWER CONTACTS DIRECT MOTOR CONTROL 1Kw 1ph	P03CD	
			TWO SPEED	P03D2		460
		SINGLE SPEED	HP03		330	
		TWO SPEED	HP03.D2		350	
		SINGLE SPEED	DC30		600	
				(* 1th 25A EXTRA HIGH POWER CONTACTS BLOCK FOR DIRECT MOTOR CONTROL : 2.2kW 1ph / 4kW 3ph	DC30.RG	
				DC30.GE		600
			TWO SPEED	DC30D2		650

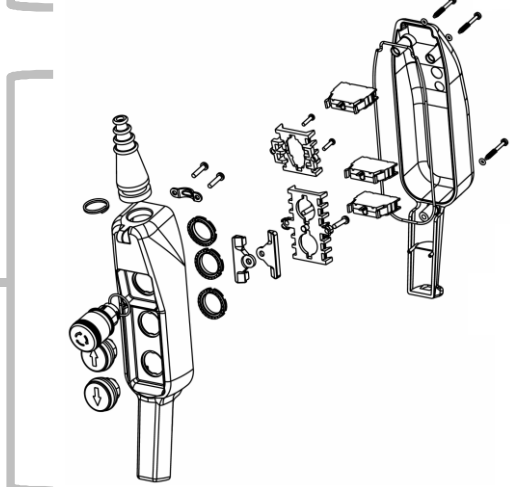
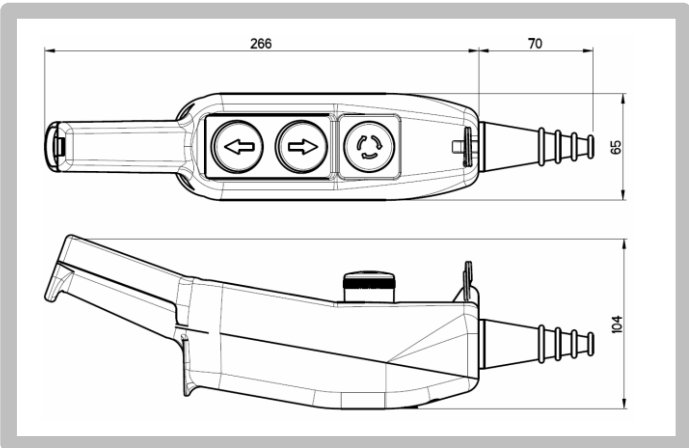


LIFTING EQUIPMENT

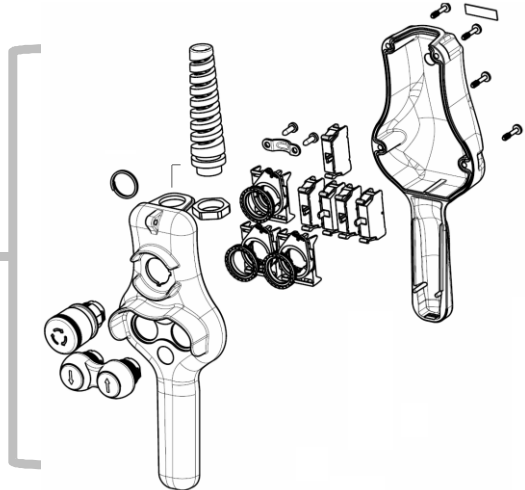
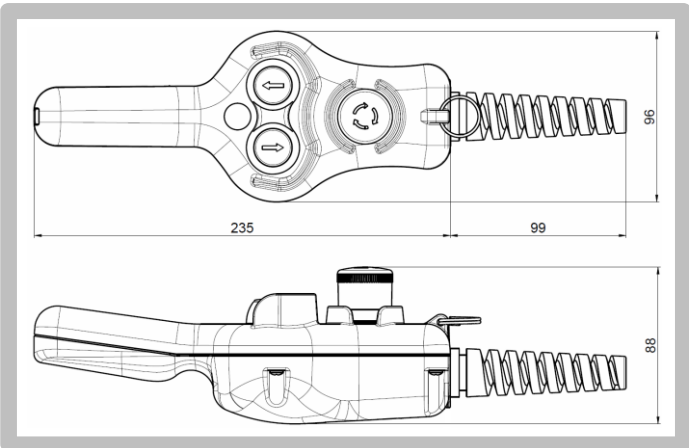
P02



P03



HP03



DC30

